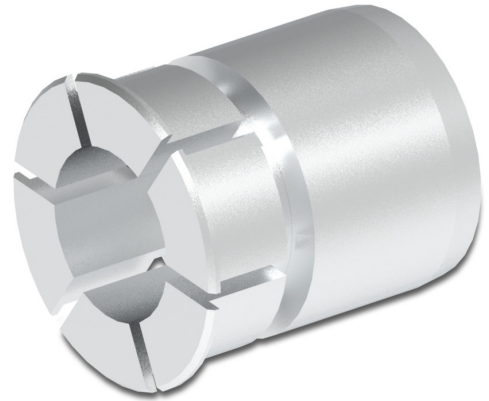


Reducer insert HS35 $\varnothing 0.625''$ ($\varnothing 15.875$ mm)

Article number: 11080114

Overview

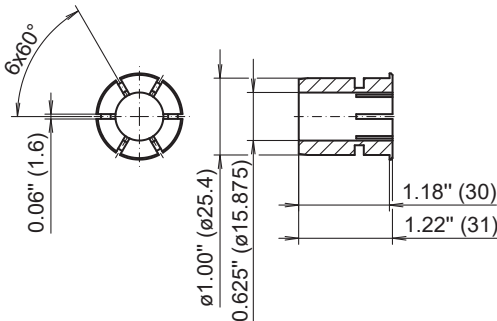
- Easy assembly by plugging in
- Exchange possible without tools
- Quick adjustment of the required diameter
- Suitable for high speeds



Description

Allows the mounting on diameter $\varnothing 0.625''$ ($\varnothing 15.875$ mm) on the motor shaft. Basis for the reducer insert is a hollow shaft diameter of 25.4 mm. Subsequent replacement without tools. Outer diameter: 25.4 mm, Material: Aluminium

Dimensions



\varnothing nominal dimension		tolerance		
inch (in ")	metric (in mm)		inch (in 1/1000")	metric (in μ m)
0.625"	15.875	G7	+0.94 +0.24	+24 +6