

Double loops coupling (D1=10 / D2=10)

For encoder with solid shaft

Article number: 11101781

Overview

- Thermally and electrically isolated
- Absorbing shocks and vibration
- Excellent compensation of radial, lateral and angular misalignments
- Medium torsional stiffness
- Low restoring forces
- Maintenance-free



Technical data

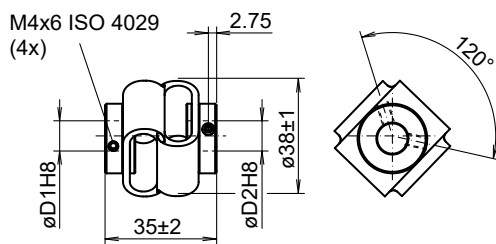
Technical data

Shaft diameter D1	10 mm
Shaft diameter D2	10 mm
Operating speed	≤3000 rpm
Operating temperature	-30...+80 °C
Moment of inertia	104 gcm ²
Torsional rigidity	25 Nm/rad
Radial spring stiffness	15 N/mm

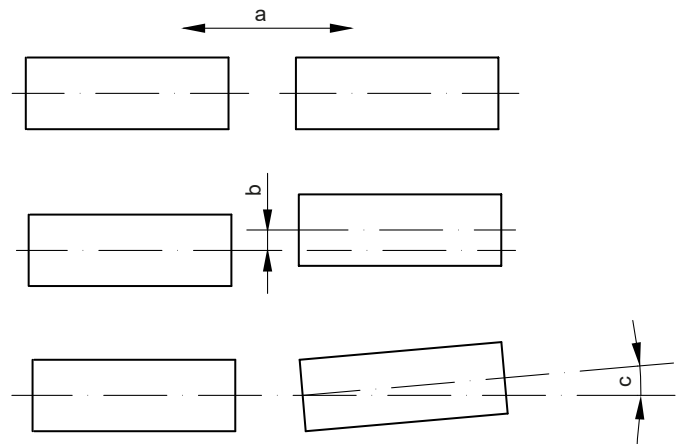
Technical data

Maximum torque	150 Ncm
Admissible axial movement	± 3 mm
Admissible parallel misalignment	± 2.5 mm
Admissible angular error	± 10 °
Weight approx.	48 g
Material	Flange: steel zinc-coated Connecting element: plastic

Dimensions



Assembly drawing



a = Admissible axial movement
b = Admissible parallel misalignment
c = Admissible angular error